



# R4,350,000

HEADS RESIDENTIAL PROPERTY

Plumstead, Cape Town



## Property Features

### Interior

Bedrooms  
Bathrooms  
Recep. Rooms  
Studies

4  
2  
3  
2.0

### Exterior

Garages  
Security  
Views

1  
Yes  
Yes

### Sizes

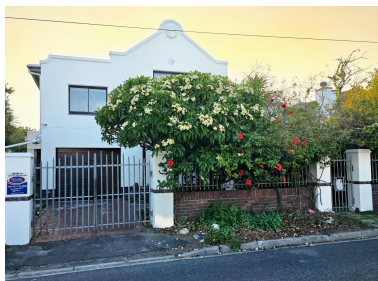
Land Size

495m<sup>2</sup>

### Financial

Rates

R 1969.96



## Monthly Repayments

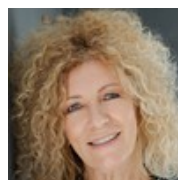
R 43,430 (Estimated)

Disclaimer : Whilst every effort has been made to ensure the accuracy of the information contained herein, no liability can be accepted for any errors or omissions and the Tenant or Buyer is advised to verify the facts prior to making any offer to lease or purchase.



### Jonathan Bronkhorst

Tel (021) 6837029  
Mobile 083 603 0004  
Email [jonathan@headsproperty.co.za](mailto:jonathan@headsproperty.co.za)



### Teresa Curran

Tel (021) 6837029  
Mobile 082 685 2292  
Email [teresa@headsproperty.co.za](mailto:teresa@headsproperty.co.za)

Web Ref RL1657

[www.headsproperty.co.za](http://www.headsproperty.co.za)



**R4,350,000**

**HEADS RESIDENTIAL PROPERTY**

**Plumstead, Cape Town**

## 4 Bedroom home in Plumstead

Sole Mandate Heart and Soul Well loved and preserved for the last 23 years, this double story family home welcomes you with its charm and character, warm wooden floors and doors adding to its sense of place! Artistically creative, calm and serene, the downstairs rooms invite the sunshine in creating a very pleasing atmosphere. A pillared patio entrance leads you into the sunny spacious lounge with sliding doors to a private wooden deck for alfresco dining and is surrounded by lush greenery. A delightful open plan, modern, eat in kitchen entices you and is perfect for friends and family gatherings. Plenty of storage space, a corner pantry cupboard, built in oven, glass top hob, extractor fan and space for a generous sized fridge. The double sink has views to the front garden, while undercounter lights add to the ambience. Double doors lead into a versatile space which can easily be used as a separate dining room or TV room as it flows to the enchanting treed and grassed garden which has been planted with seasonal bulbs for all year round colour! Music room or study with picture windows and a view over the established garden  
BONUS: A separate super-sized entertainment room / work-from-home, or ideal as an easy conversion with potential for those needing a flatlet for granny / teenage kids, or an income - generating addition! An interleading artists studio completes the downstairs areas There is a guest toilet as well as a separate laundry room. More storage is found under the staircase Upstairs you will find four bedrooms with beautiful wooden floors and loft ceilings, and two bathrooms. ~ Bedroom 1 - Street facing double bed with en suite shower bathroom ~ Bedroom 2 - King size bedroom with plenty wall space to add cupboards of your choice ~ Bedroom 3 - the smallest of the 4 but offers views to the mountain! ~ Bedroom 4 - double bed with views over the garden The family bathroom boasts a Victorian slipper bath, built in vanity basin and a separate shower with a feature porthole window. A big highlight is the Solar battery inverter as well as Jojo tanks set up for a grey water system Single automated garage with storage shelves and parking for 1 car behind double gates. Good security enables a peaceful nights sleep! VIEW BY APPOINTMENT



**Web Ref RL1657**

**[www.headsproperty.co.za](http://www.headsproperty.co.za)**